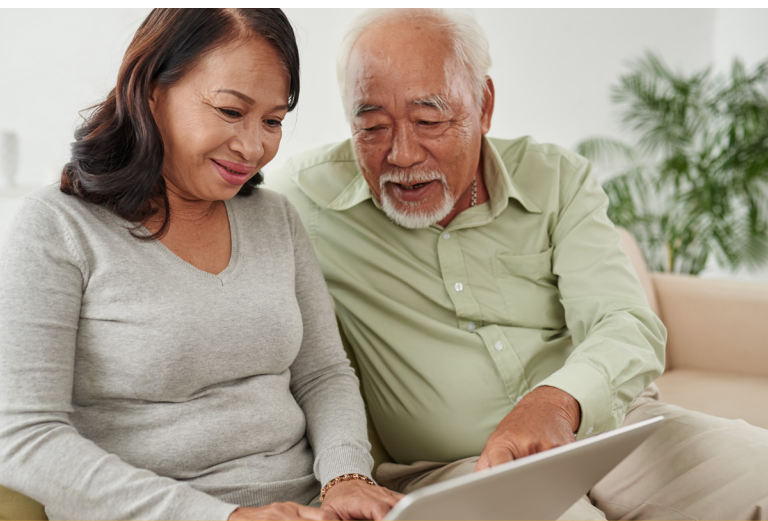


# WASHINGTON'S WORKING FAMILIES TAX CREDIT



## Need help completing your application?

You can get free help at any Department of Revenue local office. Be sure to bring a copy of your complete Federal income tax return with you to complete your application.



**For more information:**

[wftc.wa.gov](http://wftc.wa.gov)

360-763-7300

Department of  
**Revenue**  
*Washington State*

# Department of Revenue

## local offices near you

**Port Angeles** - 734 E First St Suite B  
Port Angeles, WA 98362



360-417-9900

Open Mon, Wed, and Fri, 8:30 a.m.- 4:30 p.m.  
(Closed 11:30 a.m.-12:30 p.m.)

---

**Tumwater** - 6500 Linderson Way SW  
Tumwater, WA 98501



360-705-6705

Open Mon-Fri, 8:30 a.m.-4:30 p.m.

---

**Vancouver** - 8008 NE 4th Plain Blvd Suite 320  
Vancouver, WA 98662



360-256-2060

Open Mon, Wed, and Fri, 8:30 a.m.- 4:30 p.m.  
(Closed 11:30 a.m.-12:30 p.m.)

---